



# PALLEON MOBILE

## Foam dosing systems



**PALLEON MOBILE IS DESIGNED FOR FIREFIGHTING VEHICLES USING ONLY CLASS B FOAM.**

### PALLEON MOBILE

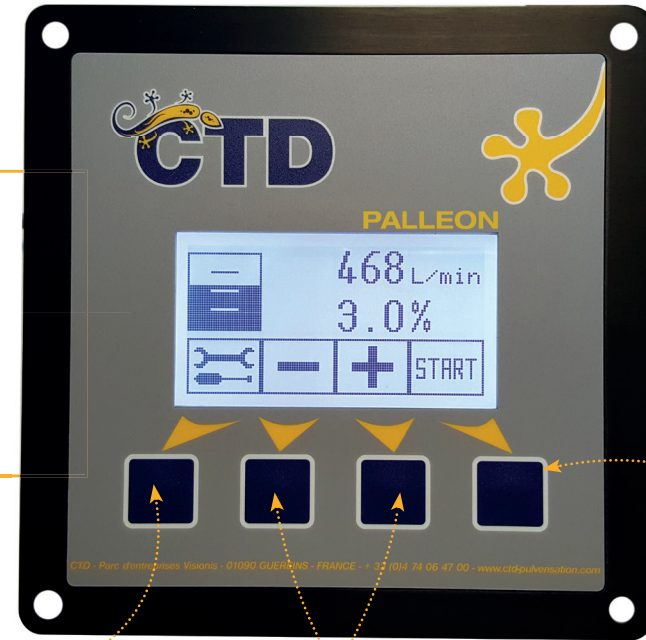
- Pump: 24 l/min
- Pressure: 15 bar
- Dosage: 1 to 6%
- Water flow rate (DN40): 30 - 850 l/min  
*(other flow rates possible)*
- Power supply: Electricity 24VDC  
*(other voltages possible)*



#### OPERATING PRINCIPLE

PALLEON MOBILE starts up by pressing the START/STOP button. The + and - buttons allow for quick and easy selection of the desired CLASS B foam concentration.

Positive injection PALLEON MOBILE system inject CLASS B foam according to real time waterflow as soon as a nozzle is open. After intervention, PALLEON MOBILE automatically starts a flushing cycle.



Configuration button

Power START/STOP

Quick and easy selection of the desired Class B foam concentration (1 to 6 % in 0.1 % increments)

### SCREEN BENEFITS



**WATERPROOF AND ROBUST UNIT**



**WATER AND PRODUCT METER**



**WATER FLOW RATE AND CONCENTRATION DISPLAY**

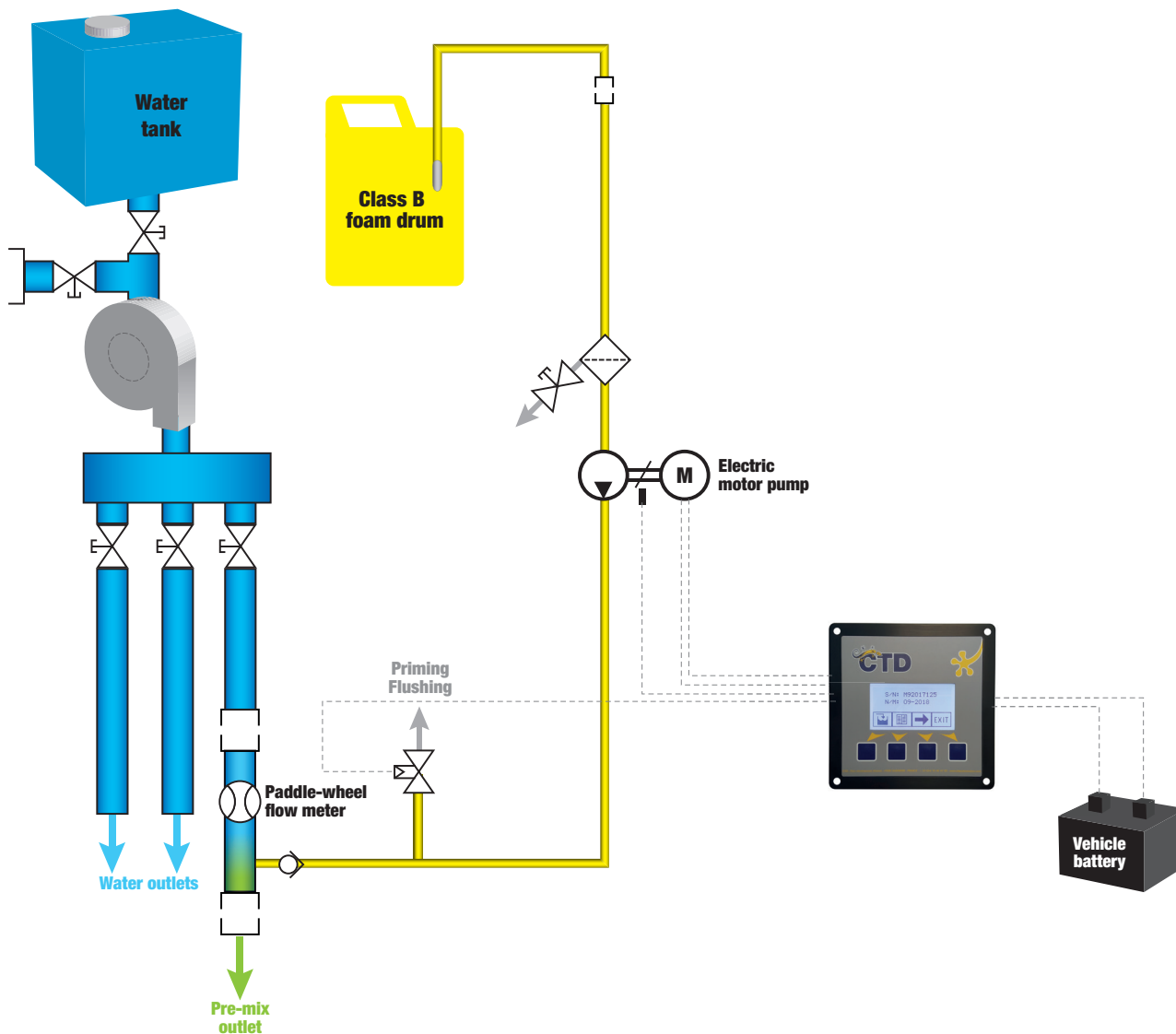


**READY TO USE**



**INTERVENTION REPORT**

## OPERATING DIAGRAM



## SYSTEM BENEFITS

### + ECONOMICAL

Quicker extinguishing means less water consumption.

### + FUNCTIONAL

- Compatible with all Class B additives
- Easy to put into service
- Light weight and compact size 600 x 400 x 320 mm - 41 kg
- Easy maintenance
- Automatic flushing

### + EFFECTIVE

The use of class B product makes fire extinguishing more effective and reduce fire fighter intervention time.

### + SIMPLE

- Quick start-up
- Autonomous system powered by a connection on the 24V network of the truck (plug supplied)
- Instantaneous production of foam
- No flushing

### + HIGH PERFORMANCE

Injecting the product under pressure means PALLEON can be used whatever the water flow rate and pressure. Pre-mixing is performed in the truck without any pressure loss this allows fireman deployment to be far from the danger zones.

