

### FEATURES

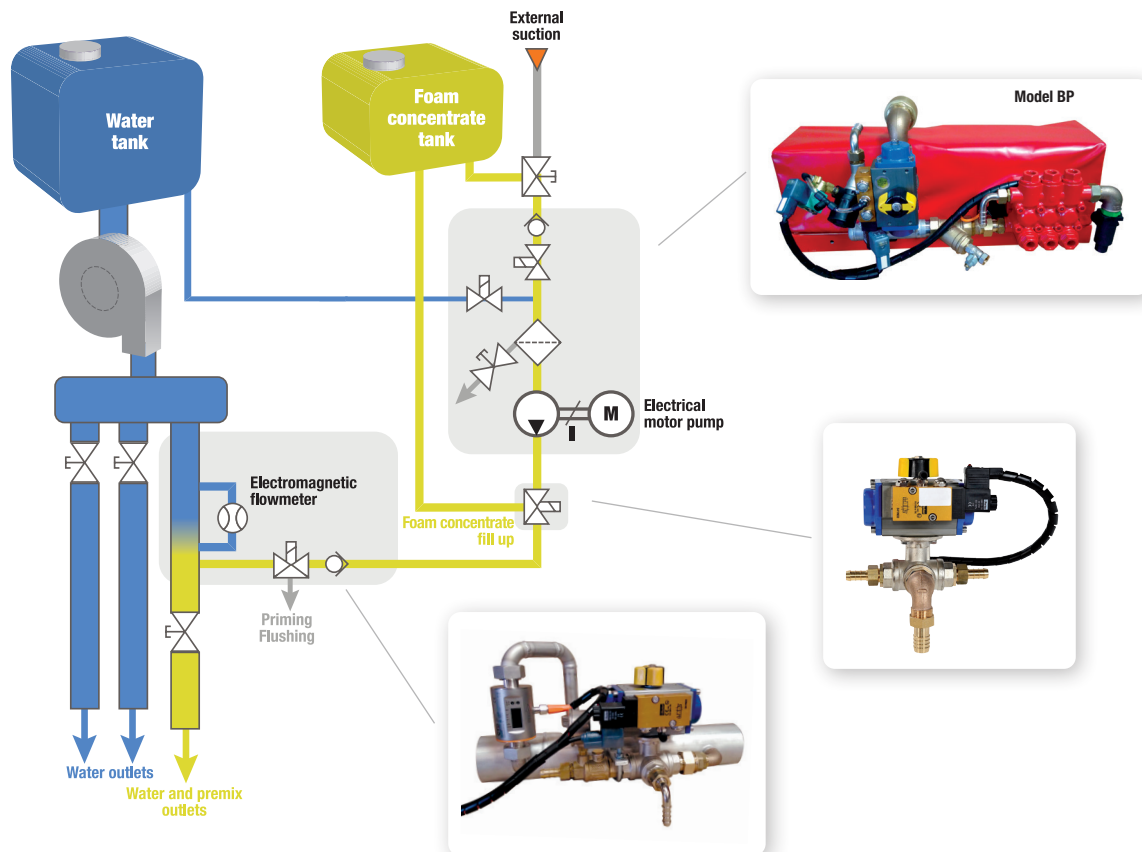
Van Truck

Water Pump < 3000 L/min

Classe B

* by default	BP	HP	HV
<b>Pump flow range</b>	0.4 to 30 lpm	0.6 to 24 lpm	0.6 to 30 lpm
<b>Pump type</b>	Piston		Gear
<b>Suction</b>	-0.15 bar		
<b>Pressure</b>	12 bar	45 bar	12 bar
<b>Dosing range*</b>	0.5 to 6%		
<b>Water flow range*</b>	2 1/2": 50 to 2,000 lpm	1 1/2": 35 to 350 lpm	2 1/2": 50 to 2,000 lpm
<b>Power</b>	elec 24V - 60A	elec 24V - 140A	elec 24V - 95A
<b>Product viscosity compatibility</b>	< 120 Mpa.s <sup>(1)</sup> at 20°C		< 400 Mpa.s <sup>(1)</sup> at 20°C
<b>Priming</b>	Manual		

<sup>(1)</sup> At 375 s<sup>-1</sup> shear rate following the norm EN 1568-3:2018



### POSSIBLE OPTIONS



Flushing



External suction



Product tank filling



Tank level sensor



External suction hose



Additional screen



Canopen bus communication